

Server Management Software

MasterScope SystemManager



MasterScope SystemManager centrally manages the information of failures, configuration and performance on multi platform environment, allowing stable and efficient operation.

Benefits

Management cost saving

Failure, configuration, and performance information for multi-vendor/multi-platform servers is managed centrally by using a suite of functions that allow you to quickly ascertain server statuses, greatly reducing management work.

Early detection and prevention of failure

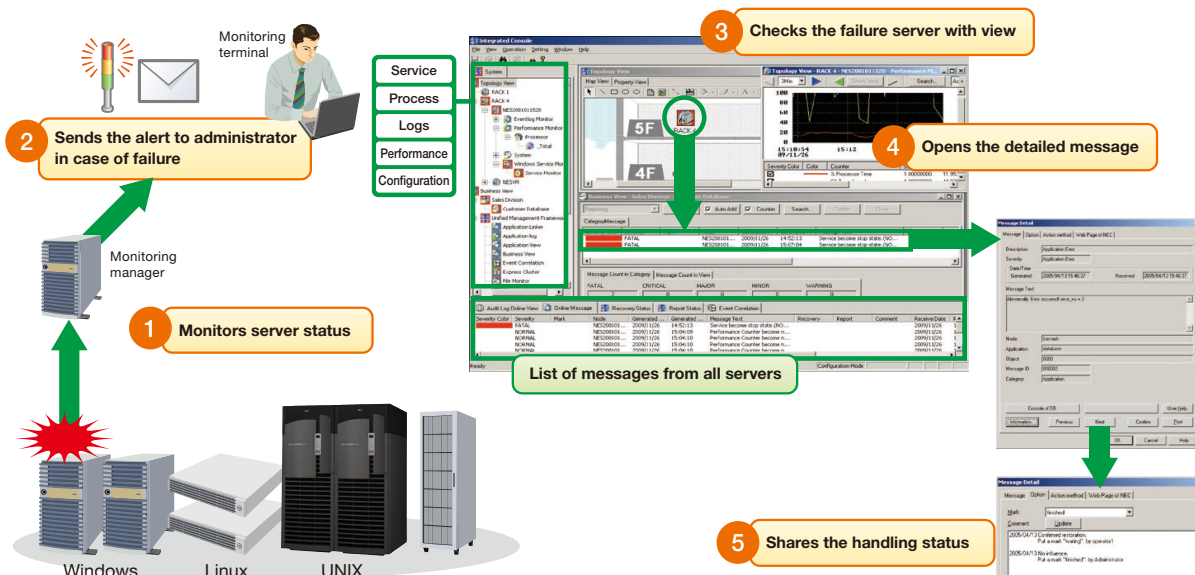
Early failure prediction and detection, as well as failure prevention can be realized by monitoring server status. With monitoring various items, servers can also be recovered quickly from a system failure.

Smooth function expansion

The GUI is integrated with other MasterScope products, allowing you to centrally manage servers, network and application monitoring items added later.

Operation Image

SystemManager centrally manages servers spread across divisions and systems, allowing all operations from failure detection to failure handling to be handled simply and smoothly.



Features

Category	Function	Description
Failure management	Monitoring processes and services	Alive monitoring for processes and Windows services.
	Monitoring logs (event log/Syslog/application log)	<ul style="list-style-type: none"> Monitoring messages by extracting necessary logs from the text log file output by the application or the Syslog/event log. The Agent can prevent the same message from being output continuously, as a countermeasure against a rush of messages.
	Monitoring the file capacity	<ul style="list-style-type: none"> Monitoring whether a file or directory exists, whether the file or directory capacity exceeds the threshold, and whether the file or directory has been updated. Preventing disk shortage and detecting the deletion or updating of system-critical files of an early stage.
	Monitoring schedules	Controlling the start and stop schedule for each server.
Performance management	Monitoring the performance	<ul style="list-style-type: none"> Displaying and printing the operating status of each server on a graph. Monitoring whether a threshold excess occurs, and if a threshold excess is detected, reporting to the operator according to one of the following determination methods: sequential, N times in a row, and the average every N times. Accumulating the operating statuses as design information and using this information to analyze and fix system problems.
Configuration management	Displaying configuration information	Collectively displaying the configuration information (device, system, software, network, disk, etc.) of the servers to be monitored.
Common functions	Reporting	<ul style="list-style-type: none"> Reporting message issuance, the state transition of a monitoring process or service, and a resource threshold excess by e-mail or an alarm light. Executing a command from the Manager when a certain message is issued.
	Audit log management	Managing the history of the contents and execution results of the operations executed from a monitoring terminal and automatically-executed operations.
	User management	Specifying the range of operations available for each user. Granting each user appropriate permissions to prevent operating mistakes and ensure security.

* Functions commonly used for failure management, performance management, and configuration management

Product Lineup

Product Name	Description
Manager function MasterScope SystemManager Manager	Centrally manages monitoring results collected from targets and reports them to the viewer. Executes the troubleshooting.
Agent function MasterScope SystemManager Agent	Self-monitors and reports monitoring results to the Manager.
Viewer function MasterScope SystemManager Viewer	Monitoring terminal *Included with the Manager license
Manager duplication (option) MasterScope SystemManager HA Option Agent	Option required to Agent if a Manager is duplicated.

System Requirements

Supported Platforms	Manager	Agent	Viewer
Windows Server 2003 SP2 (x86)	✓	✓	✓
Windows Server 2003 R2 SP2 (x86, x64)	✓	✓	✓
Windows Server 2008 (x86)	✓	✓	✓
Windows Server 2008 SP2 (x86)	✓	✓	✓
Windows Vista Business			✓
Windows XP Professional			✓
RedHat Enterprise Linux 4.0/4.5/4.6/4.7 (x86)		✓	
RedHat Enterprise Linux 5 (x86)		✓	
SuSE Linux Enterprise Serve 10 SP1 (x86, x64)		✓	

- "✓" means "verified" and "supported".
- For details about the operating environments, please see the MasterScope SystemManager website.
- For other supported platforms, please contact an NEC sales representative.

Contact Information

NEC Corporation - IT Software Operations Unit / IT Network Global Solutions Division

Email: global@soft.jp.nec.com

- MasterScope is a registered trademark of NEC Corporation.
- Other product names and company names written in this leaflet are trademarks and registered trademarks of their respective companies.
- Information in this leaflet is subject to change without notice.