

Product Lineup

| Basic product | |
|-----------------------------|--|
| MasterScope Network Manager | Basic features (Manager, Viewer) Including NodeManager with 5-node license |

| Extended features | |
|--|--|
| MasterScope Network Manager ResourceManager license (*1) | Configuration/software management |
| MasterScope Network Manager NetworkProvisioning license (*2) | Linkage with NEC SigmaSystemCenter (2.1 or higher) |

- * (1) Includes 50-node license
- * (2) Only for use in Windows environments

| Upgrade licenses and additional node licenses | |
|---|--|
| MasterScope Network Manager upgrade license (*1) | |
| MasterScope Network Manager ResourceManager additional node license | |
| MasterScope Network Manager NodeManager unlimited license | |

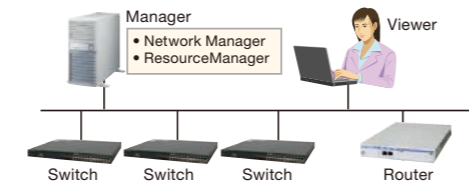
- * (1) Use this license to upgrade the number of management nodes

Configuration Example

For a network of 100 network devices (such as switches and routers)

Management requirement:
Configuration management, failure monitoring, performance monitoring, software management, front panel display

| | |
|--|----|
| Network Manager (100-node version) | x1 |
| ResourceManager license | x1 |
| ResourceManager additional 50-node license | x1 |
| NodeManager unlimited license | x1 |



System Requirements

| Supported platform | | | |
|--------------------|---|---------|--------|
| | OS | Manager | Viewer |
| | Windows Server 2003 SP2 (32bit, x64) | ✓ | ✓ |
| | Windows Server 2003 R2 SP2 (32bit, x64) | ✓ | ✓ |
| | Windows Server 2008 (32bit, x64) | ✓ | ✓ |
| | Windows Server 2008 R2 (x64) | ✓ | ✓ |
| | Windows XP Professional SP3 (32bit) | | ✓ |
| | Windows Vista Business SP2 (32bit) | | ✓ |
| | Windows 7 Professional (32bit, x64) | | ✓ |

- * (1) Not compatible with Windows Server 2008 Server Core.
- For more information and the latest updates, visit the MasterScope website.
- ✓ means "verified" and "supported".

| Hardware | | | |
|---------------|---------|--|------------------|
| | | Manager | Viewer |
| Machine | Windows | Intel Pentium series 2 GHz or higher recommended | |
| Memory | | 1 GB or higher | 512 MB or higher |
| Disk capacity | | 2 GB or higher | 400 MB or higher |

Network Management Software MasterScope Network Manager



Monitor. Maintain. Implement.
Total support to realize secure network system and efficient management for your business.

Benefits

Make sense of complicated networks in one glance

Multi-vendor networks of any scale can be centrally and visually controlled. With a clear view of your network's configuration, you can quickly address failures, abnormal traffic, and other problems.

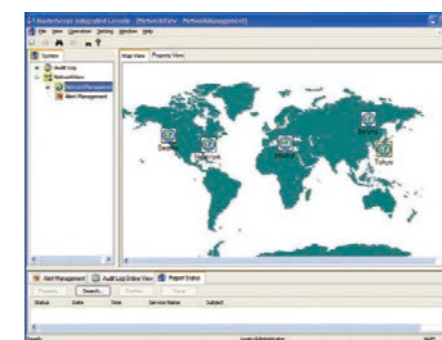
Breeze through configurations and software management

Reach new levels of maintenance efficiency and shortened work times by remotely controlling the backup of configuration files, generation management, and software update management of multi-vendor networks.

Optimize network performance management

NetworkManager creates performance reports and support traffic trends analysis, which can help to grasp the impact caused by newly implemented web applications or server additions, etc. Trends analysis can be an efficient measure at reviewing contract on WAN between offices as well.

Operation Image



Supports to monitor, maintain, and implement for multi-vendor network devices

Enterprise networks are growing in scale, complexity, and diversity – and so is the tasks of network administrators. Network management of greater efficiency than ever before is in demand and controlling network management costs has become a critical issue for business. MasterScope Network Manager is operations management software for managing multi-vendor network devices visually and centrally. Moreover, it has a great scalability that can support even the largest-scale environments. User can start from basic management of configuration, performance and troubleshooting. With expanded features, total support for users' network system will be achieved with operation efficiency and minimal cost.

Unified management of your system

MasterScope NetworkManager supports MasterScope framework, which manages the system from one console. Reduces management costs at all stages – from the construction of your management environment to actual operations phase.

- From a unified console, controls multiple products on a single window
- Minimizes human error with uniform operability based on principles from human engineering
- Smooth integration with the other MasterScope products so a system management level can be easily improved
- Boost the efficiency of administrative tasks with centralized management of configuration information

Contact Information
NEC Corporation - IT Software Operations Unit / IT Network Global Solutions Division
Email: global@soft.jp.nec.com

• MasterScope is a registered trademark of NEC Corporation.
• Other product names and company names written in this leaflet are trademarks and registered trademarks of their respective companies.
• Information in this leaflet is subject to change without notice.

© 2011 NEC Corporation 7-1, Shiba 5-chome, Minato-ku, Tokyo, 108-8001, Japan

As of March, 2011

Cat.No. E06-11030003E

MasterScope

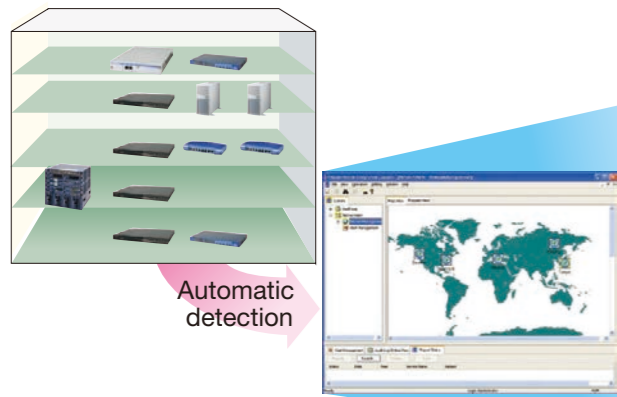
<http://www.nec.com/masterscope/networkmanager/>

Protect your system by swiftly catching warning signs before problems develop and rapidly identifying locations of problems that have occurred.

Core Features (Reducing Costs of Managing Multi-Vendor Networks)

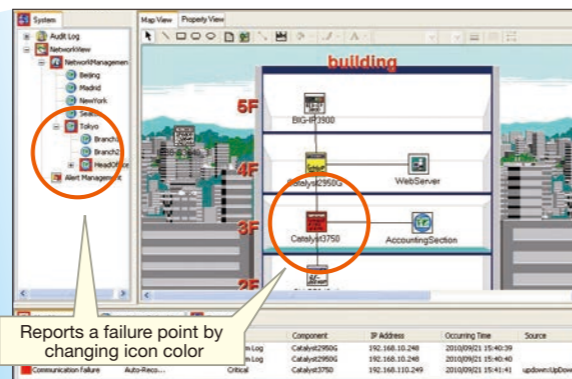
IPv4/IPv6 network configuration map display

Network Manager automatically discovers network devices and creates a network configuration map. Easy-to-understand icons represent your floors, networks, and devices, and you can freely customize their arrangement and other features.



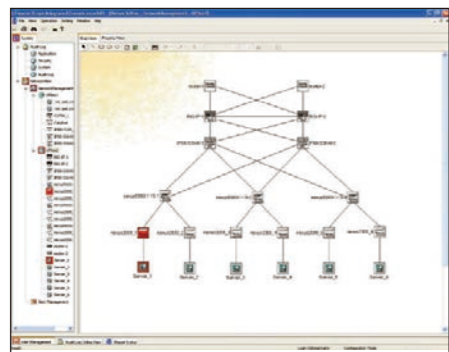
Failure notifications sent to the administrator

Immediately reports the failure root cause through monitoring alive status, MIB threshold, and the up/down check of ports. If anything abnormal is discovered, the color of the corresponding icon changes for prompt notification. Specific alerts can also be reported through methods such as email, alarm light and trap forwarding so that you can catch errors swiftly with no need to sticking on monitoring screens when systems are operating normally.



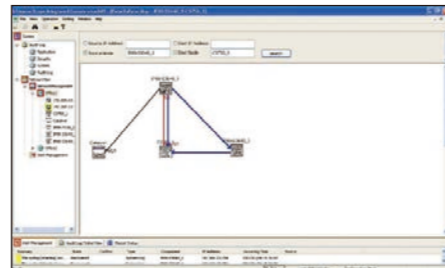
Monitoring status of physical topology

Wiring that connects devices is shown in the network configuration map. Complicated wiring and cable disconnections due to damage can be caught effortlessly and immediately.



Point to point map

Graphically displays the path between any two points on the network, such as from the terminal to the server. You can even confirm information about failures in the path (such as link failures and high-loads) from the same screen, so that you can address the root cause of communication errors fast.



Executing commands for devices

Specifies and run a schedule for predefined command lines. It can also be used to run commands during expanded trap receiving to retrieve error information.

Current alert display

Displays only the unresolved error information that you need to check and investigate. Once the system recovers, the error information is automatically deleted. Through on-screen notifications of only current alerts, you are protected against overlooking important failures.

SYSLOG monitoring function

Receives SYSLOG from network devices and notifies the administrator. SYSLOG data can also be automatically output and collected as a file.

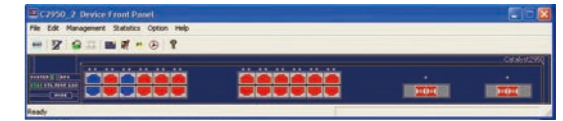
Automatically generating performance reports

Collects performance information of network traffic etc and create automated performance reports and graphs. Efficiently manages network performance using day/week/month/year or other units as needed. Collects information about the communication flow as monitored from the switch and router (sFlow). The performance report gives you a detailed picture of network usage.



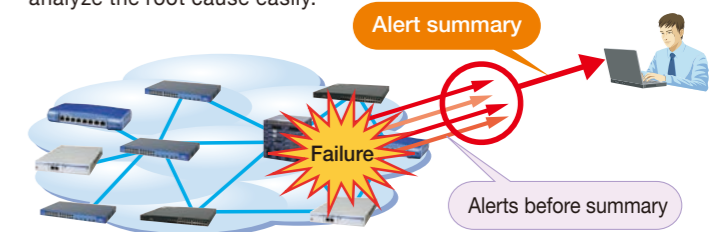
Front panel display (NodeManager)

Understanding the status of ports is simple using a front panel view that looks like the real thing. You can manage each device visually and refer to information particular to each device, like memory and temperature.



Alert summary

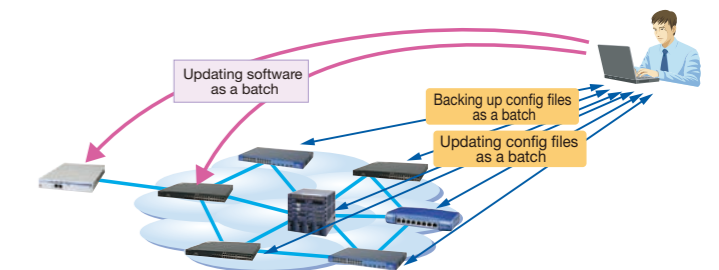
In case of network failures, huge amounts of alerts (link up, link down, etc) will be generated. Network Manager resolves the problem by choosing only important alerts to send and accordingly, enables to analyze the root cause easily.



ResourceManager (Optimizing the Management of Configuration Files and Software)

Backup and generation management of configuration files

The configuration files of your multi-vendor network devices can be backed up all at once. Generation management is provided for the backed up configuration files, so that you can investigate the difference in any two files.



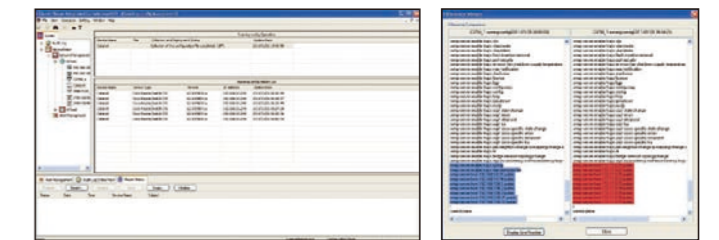
Updating all of your configuration files at once

Configuration files for your multi-vendor networks can be updated all at once using the same procedure. A history of file updates is recorded.

Quick and convenient software distribution

Software on multi-vendor network devices can be updated all at once. With a great reduction of time and cost, making version upgrades to the software on your numbers of devices has never been so efficient.

* This function requires a MasterScope Network Manager ResourceManager license.



Backing up configuration files at once

Displaying differentials between configuration files

NetworkProvisioning (Linkage with NEC SigmaSystemCenter)

Automatically changing the settings

As a component of NEC SigmaSystemCenter (2.1 and higher), which manages server, storage and network resources, NetworkProvisioning automatically makes changes to the load balancer settings and VLAN network configurations according to changes made to the server. The workload associated with configuration changes is significantly decreased.